



153 Burleigh Drive BURNS BEACH WA

4 🚗 5 🚗 3 🚗

Occupying a premium northern position walking distance to the future open space of Fingal Loop and Burns Beach Foreshore Park within the wonderful "Burns Beach Estate", this unique light and breezy two-storey four-bedroom home comprises bespoke coastal quality and effuses effortless harmonies encouraging a blissful retreat promising a memorable family lifestyle with breathtaking ocean views from its striking Apex balcony.

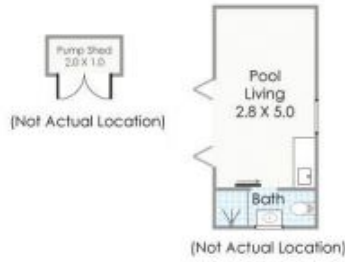
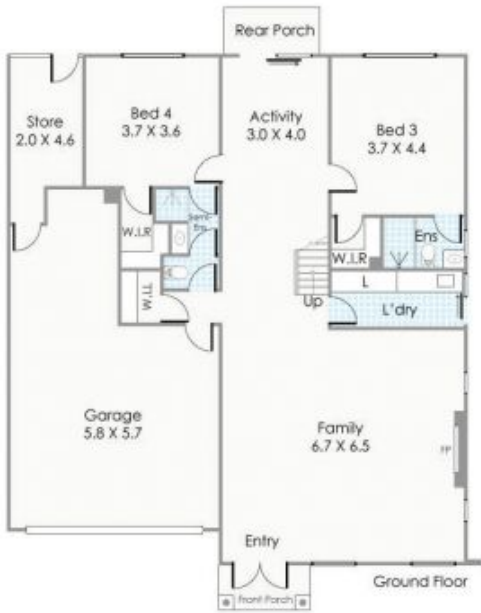
The lush Southport Park can be found around the corner and the new Burns Beach Primary School is minutes away. Enjoy an active family lifestyle, within a coastal stroll to the popular Sistas Burns Beach Caf? overlooking the glorious surf and sand of Burns Beach which turns its heart to community, ushering in all your neighbours from suburban

Type : House
Building Size : 37 sqm
Land Size : 450 sqm
View : <https://www.joyofhope.com.au/sale/wa/northern-suburbs/burns-beach/residential/house/7532364>



Johann Dique
0430041111

[For full version visit the website](https://www.joyofhope.com.au)



Approximate Areas

GROUND FLOOR

- Residence: 131.72m²
- Garage: 45.62m²
- Store: 8m²
- Pool Living: 17m²
- Pump Shed: 2m²
- Front Porch: 3m²
- Rear Porch: 3m²

FIRST FLOOR

- Residence: 134m²
- Balcony: 28.14m²
- Total Area: 372.48m²**

This floorplan is for illustration purposes only to show the layout of the property. Whilst every effort has been made to ensure the accuracy of the floor plan, all measurements and total areas do not include or account for wall thickness or roof area under eaves. Clib Creative will not be held liable or responsible for any error, omission, misrepresentation or use of any information shown on the first floor plan. Not to be used for any other purpose. www.clibcreative.com.au



153 Burleigh Drive, Burns Beach