



### 27 Whitecliffe Square ILUKA WA

4  2  2 

Sometimes all it takes to realise the full potential of a property is a new set of eyes. Tucked in behind the fringe of Sr. James McCusker Park rests this Statesman Home in the quiet much-desired, Whitecliffe Square with little to no through traffic. The chances to find a property that ticks all the boxes are as we know pretty slim. As long as the pros outweigh the cons though you can usually find a way to make it work. Renovate and reap the rewards with a location too good to pass by and a spacious home that will not fall short of what you wanted.

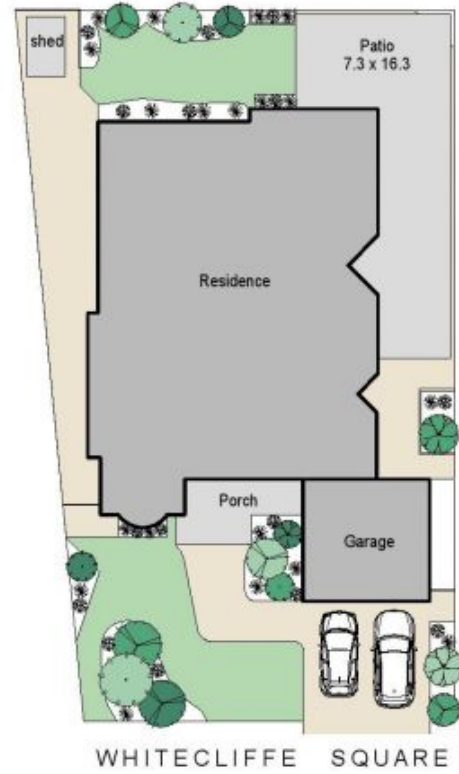
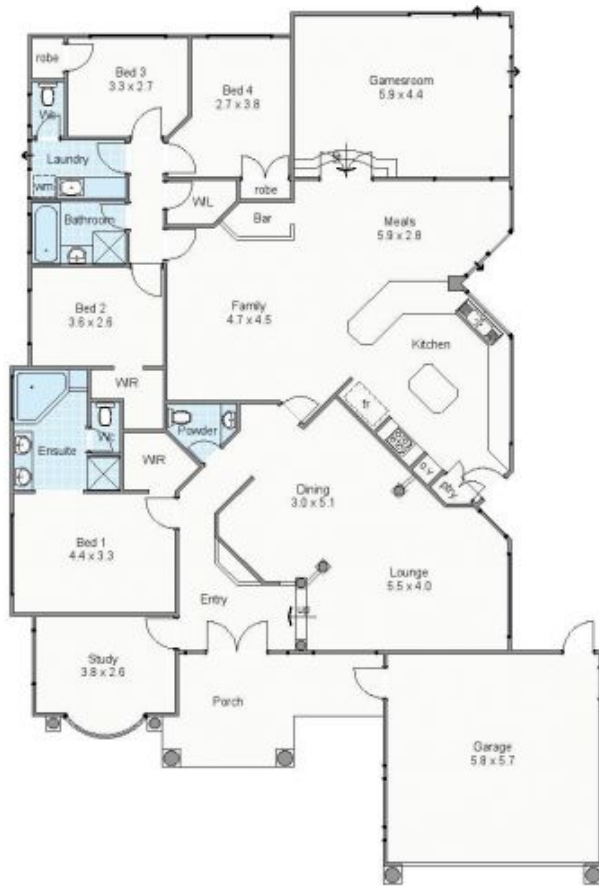
It's not hard to see why living here awards such a wonderful lifestyle as soon as you become part of this proud community. You are within 10 minutes stroll to the finest coastline fronting onto the Marmion Marine Reserve

[For full version visit the website](https://www.joyofhope.com.au)

**Type** : House  
**Building Size** : 39 sqm  
**Land Size** : 644 sqm  
**View** : <https://www.joyofhope.com.au/sale/wa/northern-suburbs/iluka/residential/house/7533698>



**Johann Dique**  
0430041111



WHITECLIFFE SQUARE

Approximate Areas

Residence:	236m <sup>2</sup>
Garage:	35m <sup>2</sup>
Patio:	75m <sup>2</sup>
Porch:	15m <sup>2</sup>
<b>Total area:</b>	<b>361m<sup>2</sup></b>

27 Whitecliffe Square, Iluka



All measurements are estimates.  
All dimensions are in metres.  
Plans are for demonstration only.  
[www.onbcreative.com.au](http://www.onbcreative.com.au)