






### 5 Whitewater Lookout ILUKA WA

5  2  2 

Driving into the entrance of a serene cul de sac, ahead the towering vision amplifies nature's subtlety. Perfectly choreographed between space, movement, material and light the rugged grandeur hopes to find the art in you.

A home is a marriage of concepts where there should be plenty of space to relax and enjoy, different spaces for rest, work, entertaining and entertainment. Here the relationship between architecture and design and the way in which they affect and control our daily lives has a strong connection to the wider landscape.

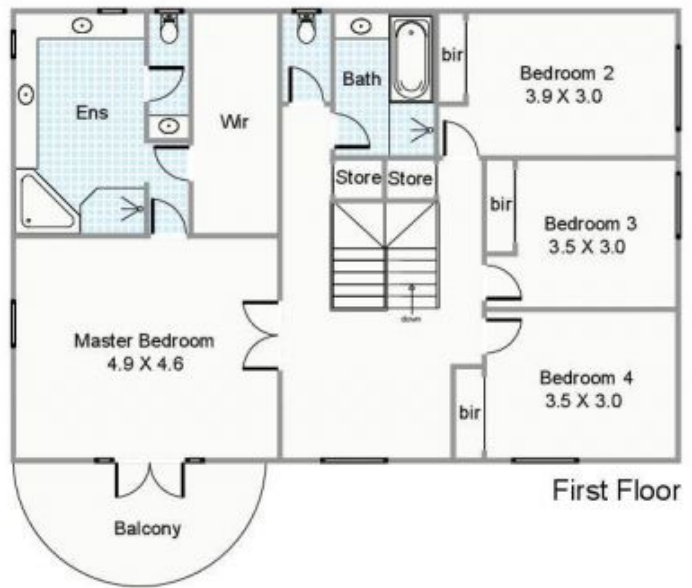
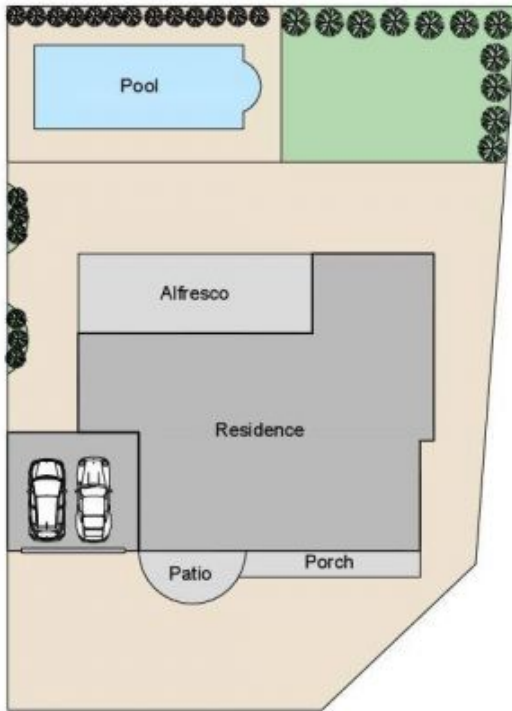
Separate living zones allow privacy for the modern family but also cater for close communal living. Now your family can have the freedom to be themselves and still live in

[For full version visit the website](https://www.joyofhope.com.au)

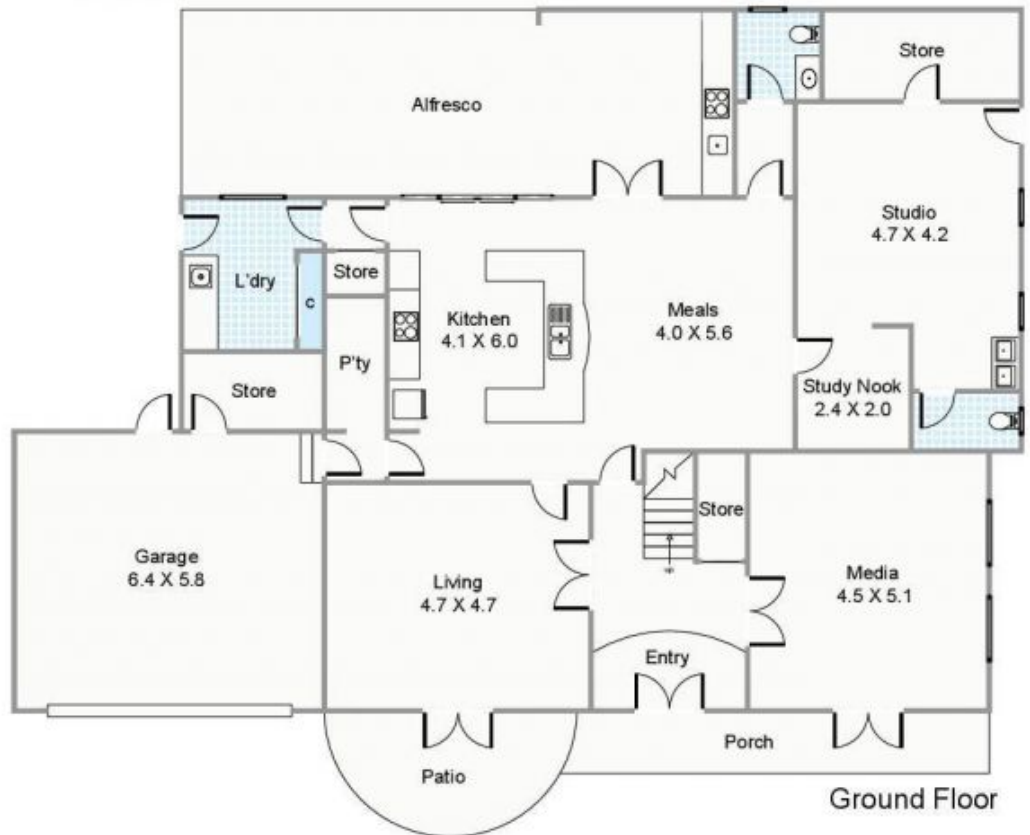
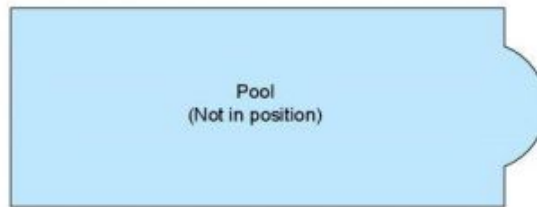
**Type** : House  
**Land Size** : 730 sqm  
**View** : <https://www.joyofhope.com.au/sale/wa/north-ern-suburbs/iluka/residential/house/753370>  
 1



**Johann Dique**  
 0430041111



Whitewater Lookout



Approximate Areas

GROUND FLOOR

- Residence: 191.2m<sup>2</sup>
- Garage: 37.9m<sup>2</sup>
- Alfresco: 45.5m<sup>2</sup>
- Patio: 10.9m<sup>2</sup>
- Porch: 11.4m<sup>2</sup>

FIRST FLOOR

- Residence: 130.8m<sup>2</sup>
- Balcony: 10.8m<sup>2</sup>

Total Area: 438.5m<sup>2</sup>

All measurements are estimates  
All dimensions are in metres.  
Plans are for demonstration only.  
[www.cribcreative.com.au](http://www.cribcreative.com.au)



5 Whitewater Lookout, Iluka