



**13B Lakeside Drive JOONDALUP WA**

3  2  2 

Home Open Cancelled - Under Offer

This apartment balances the excitement of the location with the function and flow of a well appointed couples retreat. Whether your goal is entertaining, relaxing or welcoming family and friends here you can be confident in your own personal space.

The outdoor area is designed as an extension of the living room, with the suitability of a barbecue close to the kitchen. A sense of intimacy was created by a parapet wall ensuring neighbours remain out of sight and the glass framed courtyard acts as a solar chimney, channelling the warm winter sun and afternoon breezes through the living downstairs and bedroom spaces upstairs.

[For full version visit the website](https://www.joyofhope.com.au)

**Type** : Townhouse  
**Building Size** : 16 sqm  
**Land Size** : 216 sqm  
**View** : <https://www.joyofhope.com.au/sale/wa/northern-suburbs/joondalup/residential/townhouse/7533706>



**Johann Dique**  
0430041111



Approximate Areas

GROUND FLOOR

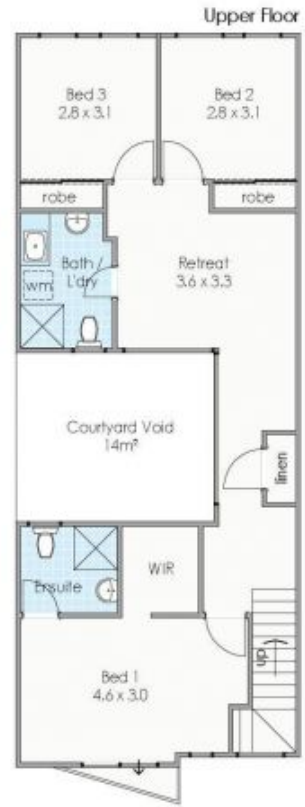
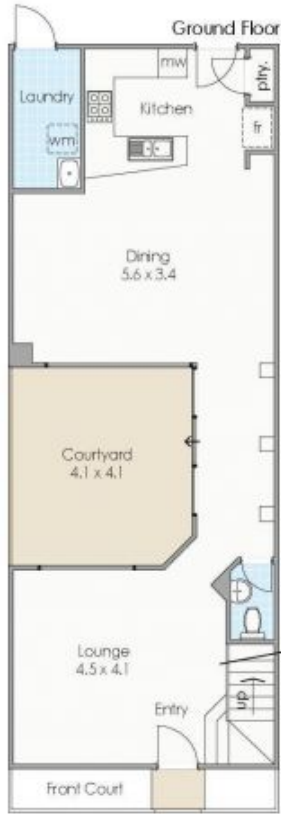
Residence:	71m <sup>2</sup>
Carports:	34m <sup>2</sup>
Courtyard:	16m <sup>2</sup>
Front Court:	6m <sup>2</sup>

UPPER FLOOR

Residence:	74m <sup>2</sup>
Balcony:	1m <sup>2</sup>
Void:	14m <sup>2</sup>

Total area: 216m<sup>2</sup>

These plans have been produced for marketing purposes and are approximate only. They are not suitable for other uses.  
www.cfbcreative.com.au



13B Lakeside Drive, Joondalup