



159A Landsdale Road DARCH WA

4  2  2 

HOME OPEN CANCELLED - UNDER CONTRACT

As we venture inside the private world of 159 A Landsdale Road, a two-fold experience unfolds. The first celebrates a curated minimalist style and the second a functional home that addresses the needs for modern family living.

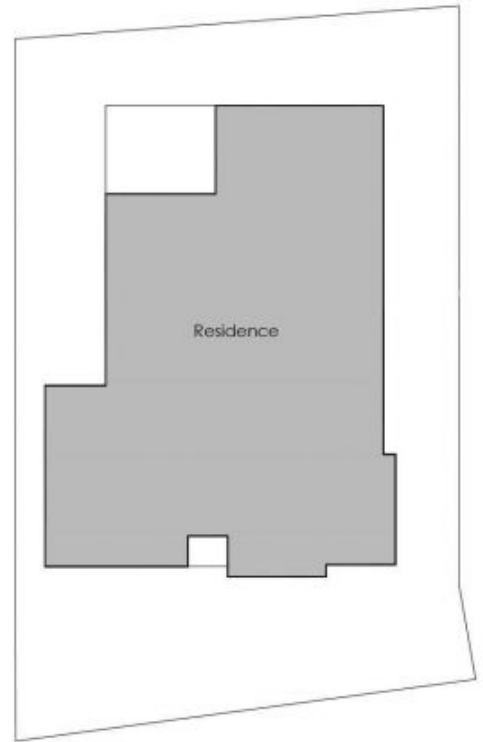
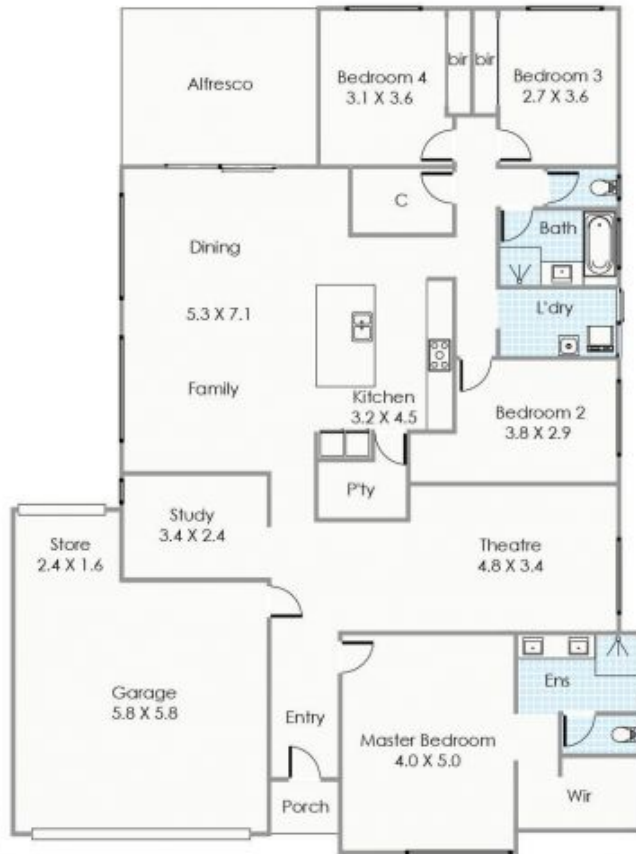
Vinyl timber flooring in deep Hamptons nuances rest alongside black aluminium frames leading the eye up and towards pewter grey roller blinds that decorate the windows. The interior plays off an industrial spatial design. The use in material variations with the layering of chocolate brickwork to the exterior, black aluminium, lightly flecked stone benchtops and matt porcelain tiles harmoniously mediates the offering. First class facilities include a 6 gas

[For full version visit the website](https://www.joyofhope.com.au)

**Type** : House  
**Building Size** : 28 sqm  
**Land Size** : 461 sqm  
**View** : <https://www.joyofhope.com.au/sale/wa/northern-suburbs/darch/residential/house/7533709>



**Johann Dique**  
0430041111



**Approximate Areas**

Residence:	199.68m <sup>2</sup>
Garage:	36.11m <sup>2</sup>
Alfresco:	17.02m <sup>2</sup>
Porch:	1.57m <sup>2</sup>
Store:	4.52m <sup>2</sup>
<b>Total Area:</b>	<b>258.90m<sup>2</sup></b>

All measurements are estimates  
 All dimensions are in metres.  
 Plans are for demonstration only.  
[www.ctbcreative.com.au](http://www.ctbcreative.com.au)



**159A Landsdale Road, Darch**