





169A Ravenscar Street DOUBLEVIEW WA

4  2  2 

This contemporary home celebrates an idyllic setting and shares the experience of living in Doubleview, well known for its urban village lifestyle. Here you are only minutes away from the local grocers, great surf and swimming beaches of the Indian Ocean and only just a short stroll to the neighbouring Bradley Reserve.

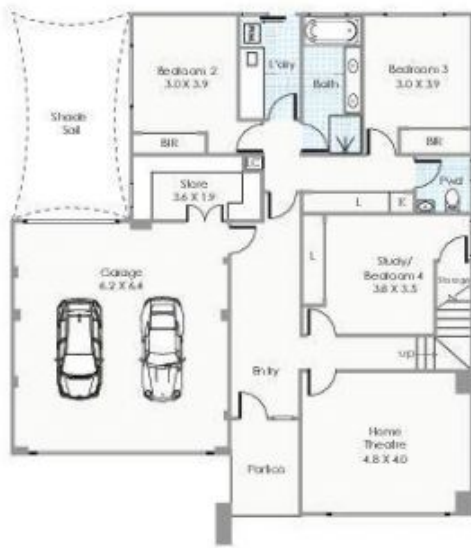
Drawing on a restraint material palette with durable finishes and architectural details, the upside-down design culminates into a light filled cozy interior space that seamlessly assimilates the living from its balcony. The design is split over two levels allowing a degree of separation from the theatre and minor bedrooms whilst the main living area and master bedroom occupies the second storey so important in a family residence.

Type : House
Building Size : 37 sqm
Land Size : 305.46 sqm
View : <https://www.joyofhope.com.au/sale/wa/northern-suburbs/doubleview/residential/house/7533714>



Johann Dique
0430041111

[For full version visit the website](https://www.joyofhope.com.au)



Approximate Areas
GROUND FLOOR
 Living: 120.90m²
 Garage: 42.93m²
 Porch: 5.84m²

FIRST FLOOR
 Living: 129.77m²
 Balcony: 38.89m²
 Total Area: 338.33m²

This floorplan is for illustration purposes only to show the layout of the property. Not to be used for any other purpose.



169A Ravenscar Street, Doubleview