



## 21 Tullamore Drive DARCH WA

4  2  2 

Enviably overlooking the beautiful Ashdale Park whilst perfectly positioned only walking distance away from Ashdale Primary School across the lush reserve and Ashdale Secondary College at the bottom of the street, this exceptional four bedroom two bathroom two-storey residence combines both quality and comfort with a sense of unrivalled grandeur effortlessly appealing the entire family's personal needs in the process.

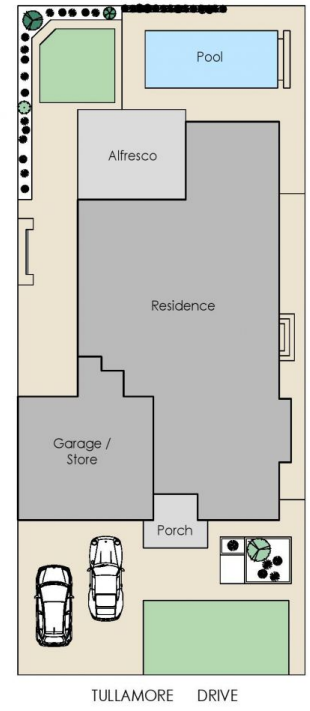
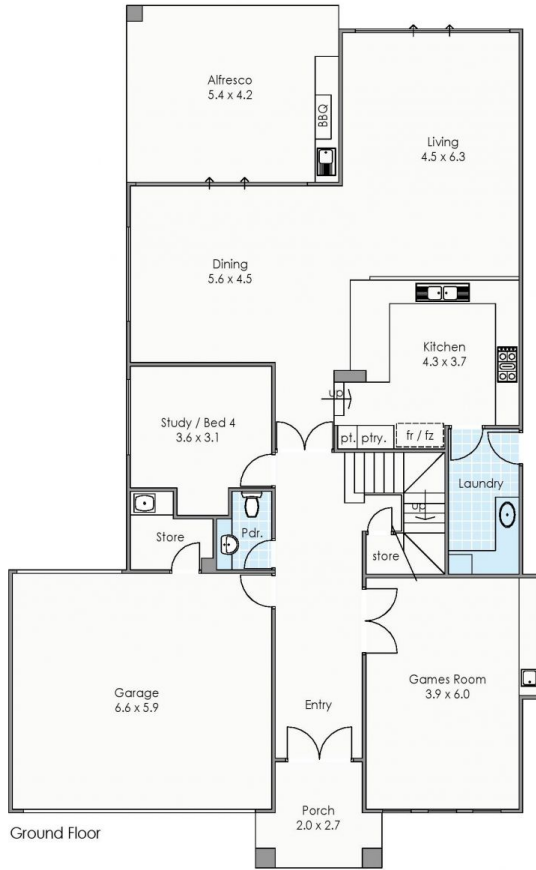
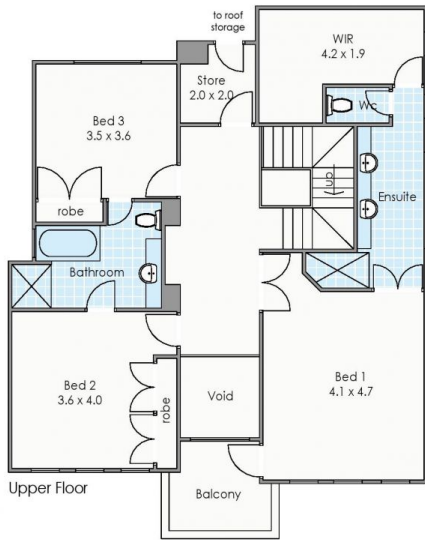
Downstairs, a sublime series of panelled double doors seamlessly connect numerous spaces together from the main entry foyer and a carpeted theatre room with splendid park views and its own stone kitchenette to a huge open-plan family and dining area where a striking feature wall is majestically overlooked by a classy elevated kitchen

**Type** : House  
**Land Size** : 480 sqm  
**View** : <https://www.joyofhope.com.au/sale/wa/north-ern-suburbs/darch/residential/house/7533725>



**Johann Dique**  
0430041111

[For full version visit the website](https://www.joyofhope.com.au)



Approximate Areas

GROUND FLOOR  
 Residence: 162m<sup>2</sup>  
 Garage / Store: 46m<sup>2</sup>  
 Alfresco: 24m<sup>2</sup>  
 Porch: 7m<sup>2</sup>

UPPER FLOOR  
 Residence: 114m<sup>2</sup>  
 Balcony: 7m<sup>2</sup>  
 Total area: 360m<sup>2</sup>

These plans have been produced for marketing purposes and are approximate only. They are not suitable for other uses.  
[www.cribcreative.com.au](http://www.cribcreative.com.au)



**21 Tullamore Drive Darch**