





2/35 Myles Road SWAN VIEW WA

4  2  2 

Stylish modern living awaits you from within the walls of this exceptional 4 bedroom 2 bathroom home on a lovely 400sqm (approx.) block in a splendid group of just four properties that sits opposite natural bushland and can be accessed via a private slip road off the main street.

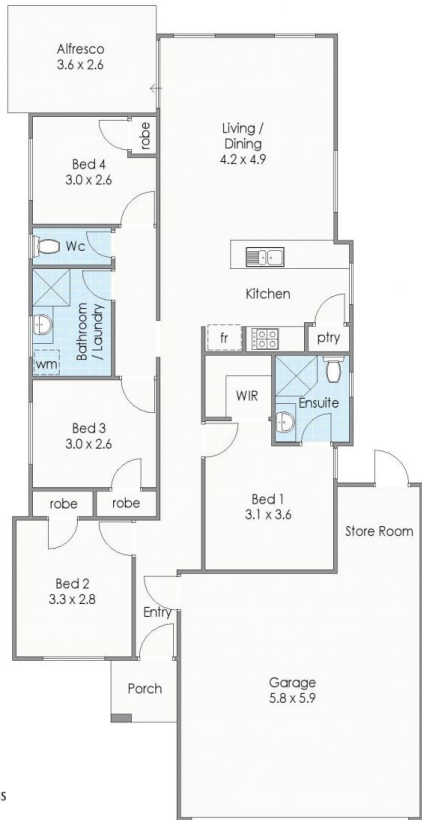
Low-maintenance flooring graces the open-plan living, dining and kitchen area of this fantastic abode, alongside a split-system air-conditioning unit, a storage pantry, a breakfast bar for casual meals and quality European gas-cooktop and oven appliances. Access out to the tranquil rear alfresco-entertaining space is seamless, whilst a generous backyard with lawns plays host to magical sunsets and even leaves enough room for a future swimming pool if you are that way inclined.

[For full version visit the website](https://www.joyofhope.com.au)

Type : House
Building Size : 16 sqm
Land Size : 400 sqm
View : <https://www.joyofhope.com.au/sale/wa/eastern-suburbs/swan-view/residential/home/7533734>



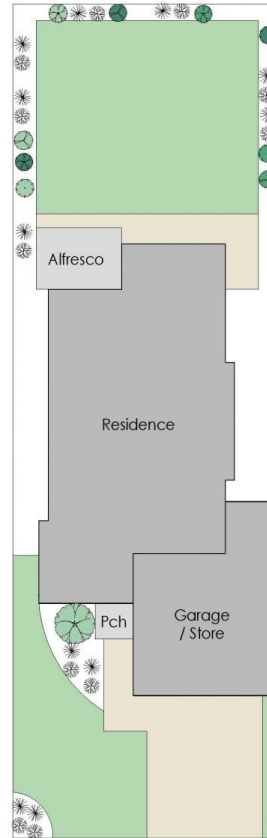
Johann Dique
0430041111



Approximate Areas

Residence:	102m ²
Garage:	40m ²
Alfresco:	9m ²
Porch:	2m ²
Total area:	153m²

These plans have been produced for marketing purposes and are approximate only. They are not suitable for other uses.
www.cribcreative.com.au



2/35 Myles Road Swan View