






6 Landsdale Road DARCH WA

4  2  4 

Nestled on a lovely 500sqm (approx.) block that is pleasantly protected from the elements and desirably faces north from its commanding street frontage, this magnificent 4 bedroom 2 bathroom home offers contemporary low-maintenance living in a wonderful location close to everything you could ever want or need.

The headline act here is a private outdoor setting where a huge pitched entertaining patio meets lush green lawn patches either side, as well as splendid easy-care gardens. A massive open-plan family, dining and kitchen area provides the access, graced largely by gleaming timber floorboards that are also commonplace throughout the passageways and a welcoming front lounge room off the entrance.

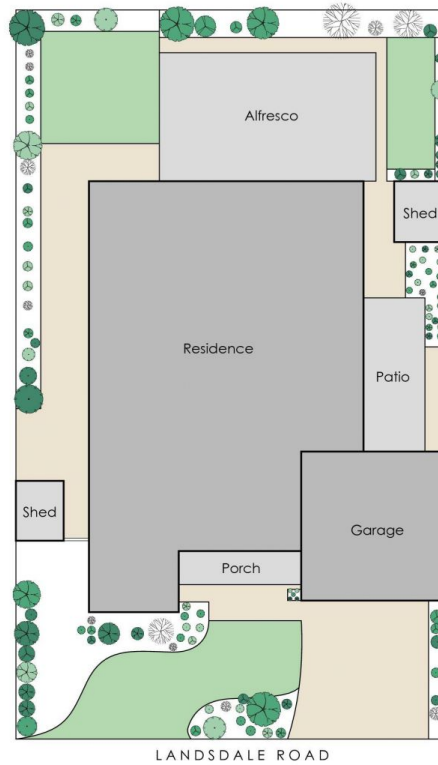
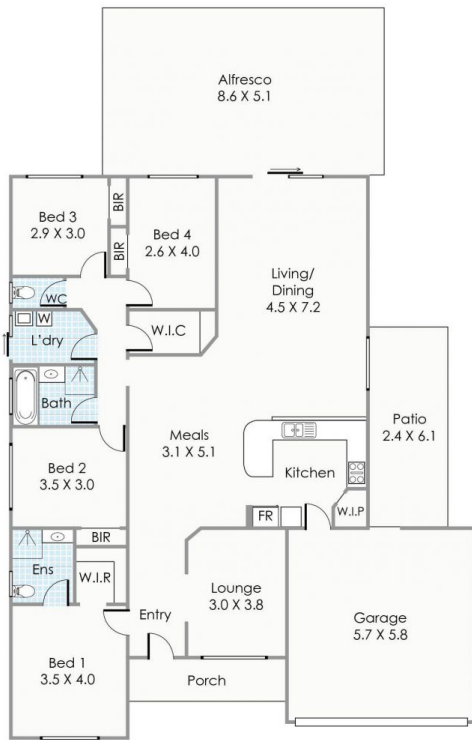
The kitchen itself is tiled and features a corner walk-in

Type : House
Building Size : 28 sqm
Land Size : 501 sqm
View : <https://www.joyofhope.com.au/sale/wa/northern-suburbs/darch/residential/house/7533738>



Johann Dique
0430041111

[For full version visit the website](https://www.joyofhope.com.au)



Approximate Areas

Residence:	159m ²
Garage:	33m ²
Alfresco:	44m ²
Porch:	6m ²
Total Area:	257m ²

This floorplan is for illustration purposes only to show the layout of the property. Not to be used for any other purpose.
www.cribcreative.com.au



6 Landsdale Road, Darch