






**70 Mariners View MINDARIE WA**

6  5  3 

Viewings By Appointment on Request.

Welcome to this Majestic offering soaring atop Mariners View. Nestled on arguably "the best block" where double-doors reveal a grand staircase with a mesmerising light-infused dome that fills the voyeur and open den-lounge with natural light. Voluminous passageways and polished earthy materials usher in a luxurious open plan with sunken open-plan formal lounge and dining room that is reserved for those special occasions. A massive carpeted theatre room - tiered seating area, retractable projector, remote-controlled screen, integrated speakers and a grand cinema.

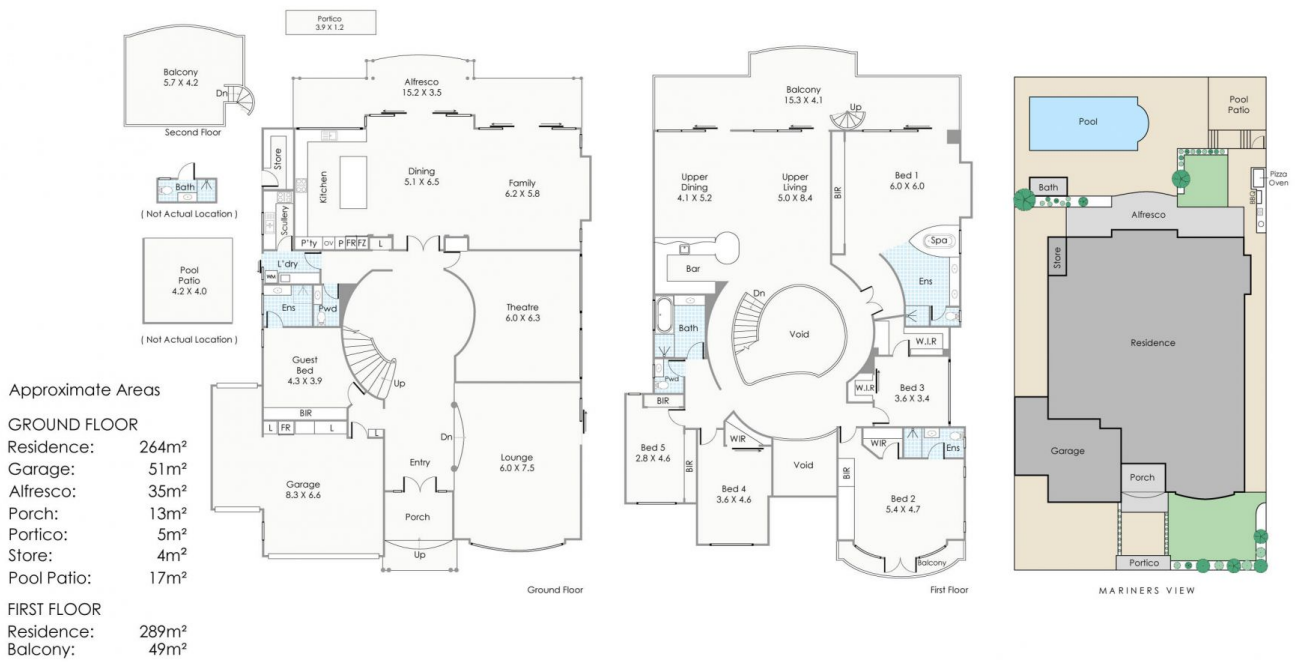
On the ground floor lies a generous carpeted sixth or

[For full version visit the website](https://www.joyofhope.com.au)

**Type** : House  
**Building Size** : 84 sqm  
**Land Size** : 800 sqm  
**View** : <https://www.joyofhope.com.au/sale/wa/northern-suburbs/mindarie/residential/house/7533750>



**Johann Dique**  
**0430041111**



Approximate Areas

GROUND FLOOR

Residence:	264m <sup>2</sup>
Garage:	51m <sup>2</sup>
Alfresco:	35m <sup>2</sup>
Porch:	13m <sup>2</sup>
Portico:	5m <sup>2</sup>
Store:	4m <sup>2</sup>
Pool Patio:	17m <sup>2</sup>

FIRST FLOOR

Residence:	289m <sup>2</sup>
Balcony:	49m <sup>2</sup>

SECOND FLOOR

Balcony:	24m <sup>2</sup>
Total Area:	779.81m <sup>2</sup>

This floorplan is for illustration purposes only to show the layout of the property. Measurements and total areas do not include or account for wall thickness or roof area under eaves. Not to be used for any other purpose.  
[www.cribcreative.com.au](http://www.cribcreative.com.au)



**70 Mariners View, Mindarie**