

**40 Fourmile Avenue BURNS BEACH WA**

4  2  2 

Modern coastal quality seamlessly assimilates resort style entertaining right throughout this stunning 4 bedroom 2 bathroom two-storey executive home on a low-maintenance corner block just two streets back from the Burns Beach Foreshore Lookout and within metres of the lovely Southport Park. The awesome ocean views and outlook down the coast from upstairs are simple added bonuses here.

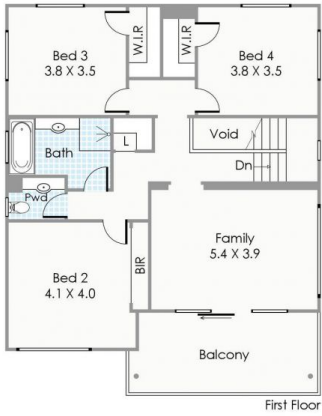
A decked walkway entrance up to the feature front door simply sets the scene for the excellence that lies within, with the welcoming foyer headlined by access into a spacious master-bedroom suite where shadow-line ceiling cornices and television provisions on the wall meet a huge walk-in wardrobe, the chance to hear the waves crashing

**Type** : House  
**Building Size** : 49 sqm  
**Land Size** : 682 sqm  
**View** : <https://www.joyofhope.com.au/sale/wa/northern-suburbs/burns-beach/residential/house/7533759>

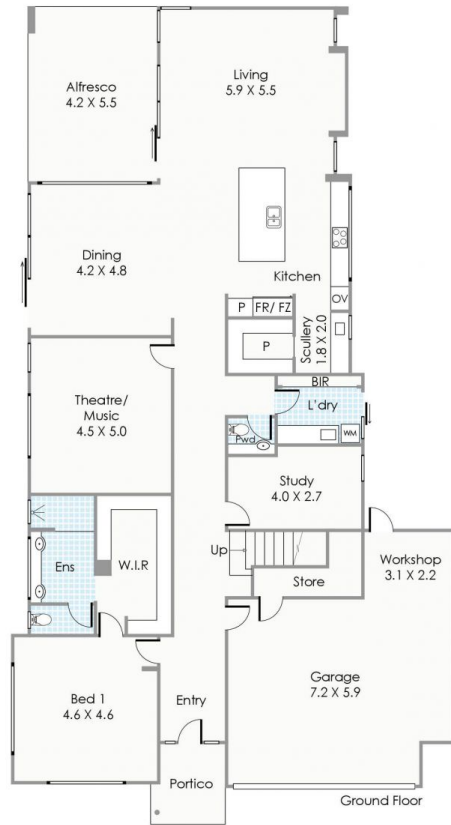


**Johann Dique**  
0430041111

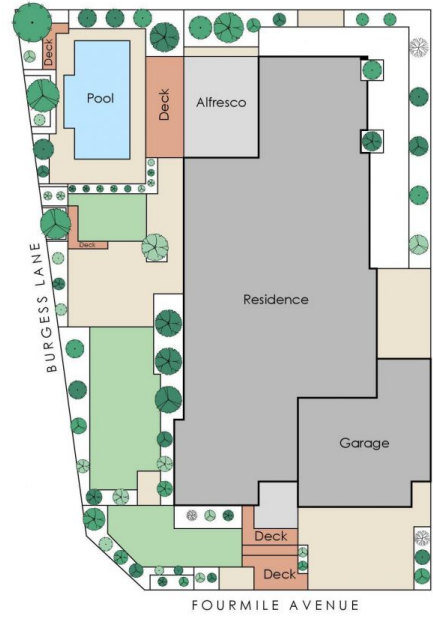
[For full version visit the website](https://www.joyofhope.com.au)



First Floor



Ground Floor



FOURMILE AVENUE

Approximate Areas

|               |                   |
|---------------|-------------------|
| Ground Floor: | 223m <sup>2</sup> |
| First Floor:  | 114m <sup>2</sup> |
| Garage:       | 52m <sup>2</sup>  |
| Portico:      | 5m <sup>2</sup>   |
| Alfresco:     | 19m <sup>2</sup>  |
| Balcony:      | 16m <sup>2</sup>  |
| Outdoor:      | 23m <sup>2</sup>  |
| Total Area:   | 452m <sup>2</sup> |

This floorplan is for illustration purposes only to show the layout of the property. Measurements and total areas do not include or account for wall thickness or roof area under eaves. Not to be used for any other purpose.  
[www.cribcreative.com.au](http://www.cribcreative.com.au)

 **40 Fourmile Avenue, Burns Beach**