






**Level 4/401/113 Grand Boulevard Joondalup WA**

3  2  2 

HOME OPEN CANCELLED 7TH OCTOBER / UNDER CONTRACT

Nestled within what is arguably Joondalup's single most desirable address and best multi-residence complex, this spacious 3 bedroom 2 bathroom end apartment at Edge's stunning "Arthouse" development defines modern quality, style, and sophistication all at once - with its 180-degree panoramic tree-lined views and magical sunsets all part of the highly-impressive package.

Arthouse is the first-of-its-kind apartment building in the heart of Joondalup and is seamlessly and conveniently connected to natural surroundings, as well as public transport links - including Joondalup Train Station - and the

**Type** : Apartment

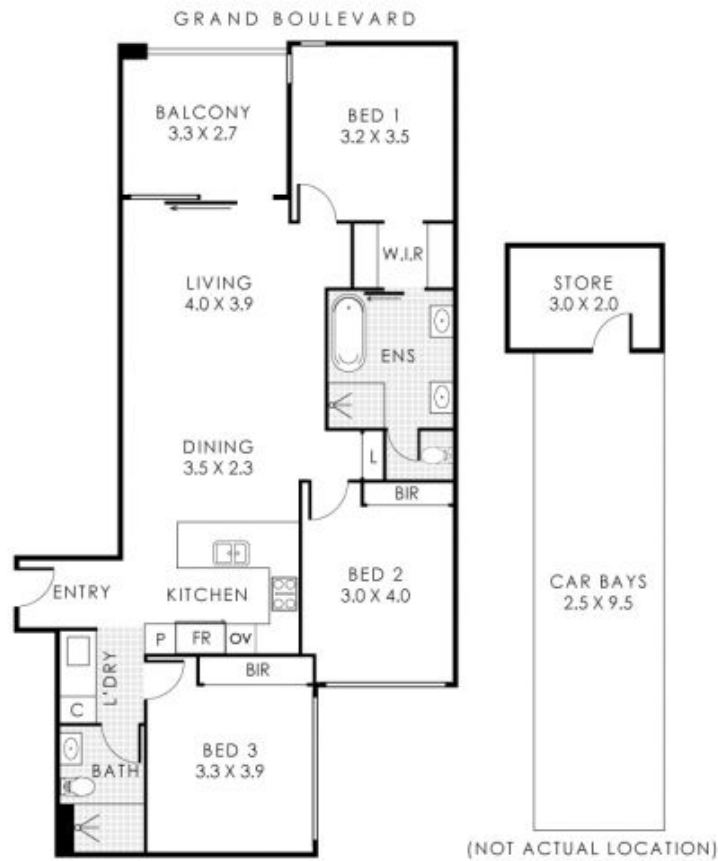
**Price** : \$ 720,000

**View** : <https://www.joyofhope.com.au/sale/wa/northern-suburbs/joondalup/residential/apartment/7736079>



**Johann Dique**  
0430041111

[For full version visit the website](https://www.joyofhope.com.au)



**401/113 Grand Boulevard, Joondalup**

Residence 93m<sup>2</sup> | Store 6m<sup>2</sup> | Car Bays 24m<sup>2</sup> | Balcony 9m<sup>2</sup>

**Total Area 132m<sup>2</sup> | Total Lot Size 132m<sup>2</sup>**



This floorplan is for illustrative purposes only to show the layout of the property. While every effort has been made to ensure the accuracy of the floorplan, all measurements and any other information shown are an approximate representation only. Measurements and floor area do not include an allowance for wall thickness or any other minor details. CIBC Wealth will not be held liable or responsible for any error, omission, misrepresentation or use of any information shown on this floor plan. We'll be used for any other purposes. [www.cibcwealth.com.au](http://www.cibcwealth.com.au)