



4 Fusus Lane Jindalee WA

3  2  2 

Stunningly overlooking the lush green Cosmia Park, its fantastic playground for the kids and nestled only walking distance away from the glorious surf and sand that the thriving "Eden Beach Estate" is renowned for, this stylish 3 bedroom 2 bathroom two-storey residence defines low-maintenance lock-up-and-leave coastal living, allowing you to wake up to splendid parkland views on a daily basis.

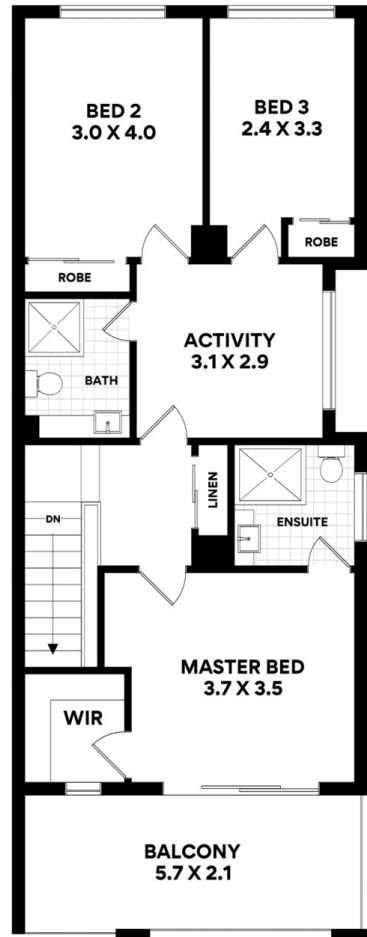
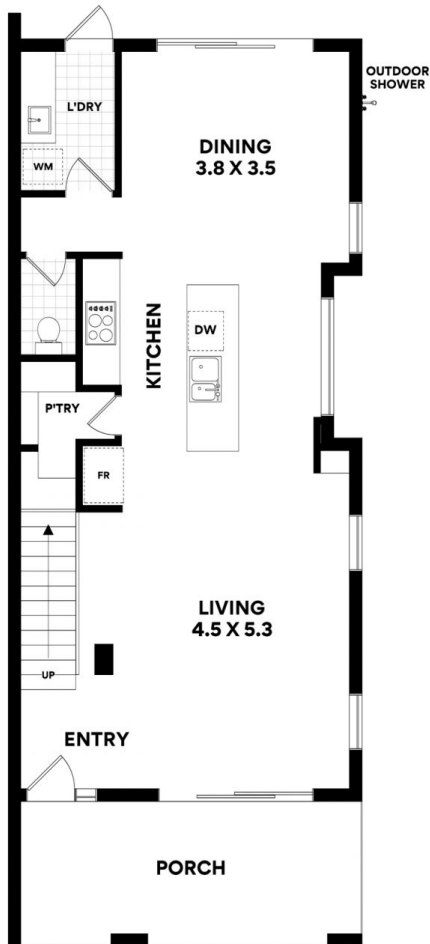
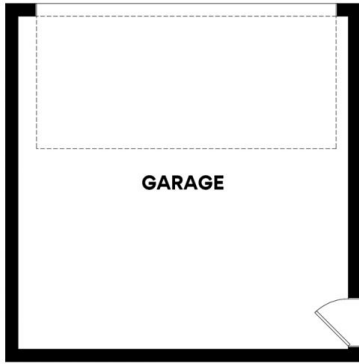
Type : Townhouse
Price : \$ 735,000
Land Size : 240 sqm
View : <https://www.joyofhope.com.au/sale/wa/north/jindalee/residential/townhouse/8042400>

Your gated parkside entry to the home via a footpath reveals a delightful courtyard and alfresco verandah that is the perfect spot to watch the sun magically rise over the park, every single morning. The latter can also be seamlessly accessed from within the open-plan dining, kitchen and living area inside - a tiled hub where sparkling



Johann Dique
0430041111

[For full version visit the website](https://www.joyofhope.com.au)



8 Fusus Lane

Living Area 153.48m² | Total Area 216.80m²
 Land Area 240.00m²

Whilst every attempt has been made to ensure the accuracy of the floorplans contained here, measurements of doors, windows and rooms are approximate and no responsibility is taken for any error, omission or misstatement. These plans are for representation purposes only.