



**B/18 Buntine Way Girrawheen WA**

3  1  1 

Prepare to be impressed by the sheer size of the huge sunken backyard that accompanies this charming 3 bedroom 1 bathroom brick-and-tile residence - as solid as they come and one of just two street-front properties that make up a well-presented group of only six homes in a whisper-quiet looped pocket of Girrawheen.

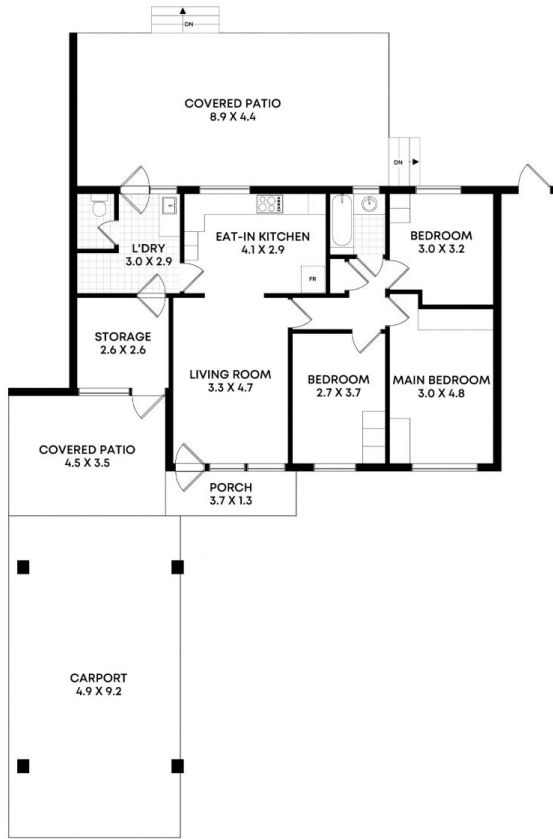
The expansive east-facing yard captures all of the natural morning sunshine and is pleasantly shaded by a large tree, creating the perfect "blank canvas" and leaving more than enough room for that firepit or future swimming pool you have always wanted. It is all so splendidly overlooked by a large outdoor patio-entertaining area at the rear, complete with its own ceiling fan.

**Type** : House  
**Price** : \$ 570,000  
**Land Size** : 372 sqm  
**View** : <https://www.joyofhope.com.au/sale/wa/north-ern-suburbs/girrawheen/residential/house/8138941>



**Johann Dique**  
0430041111

[For full version visit the website](https://www.joyofhope.com.au)



**18B Buntine Way, Girrawheen**

Internal 94.9m<sup>2</sup> | Carport 45.1m<sup>2</sup> | Porch 4.8m<sup>2</sup> | Patios 54.9m<sup>2</sup>  
 Total 199.7m<sup>2</sup>

Whilst every attempt has been made to ensure the accuracy of the floorplans contained here, measurements of doors, windows and rooms are approximate and no responsibility is taken for any error, omission or misstatement. These plans are for representation purposes only.  
 DQ Care Pty Ltd T/A Joy Abode TC RA82603 ABN 45 107 395 059