



## 6 Woodlea Crescent Joondalup WA

5 🚗 3 🚗 2 🚗

Perched in a coveted elevated position on a sprawling 1,000 sqm (approx.) cul-de-sac block, this spacious and versatile 5 bedroom 3 bathroom single-level home is the ultimate family sanctuary.

Boasting sweeping treetop views of the picturesque Lake Joondalup outskirts, it effortlessly blends modern style with functional design, offering both a luxurious master suite and a private guest retreat or studio that can be whatever you want it to be.

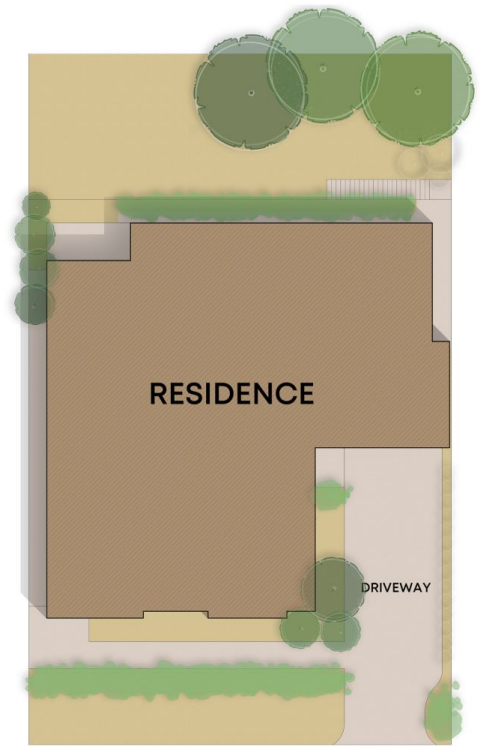
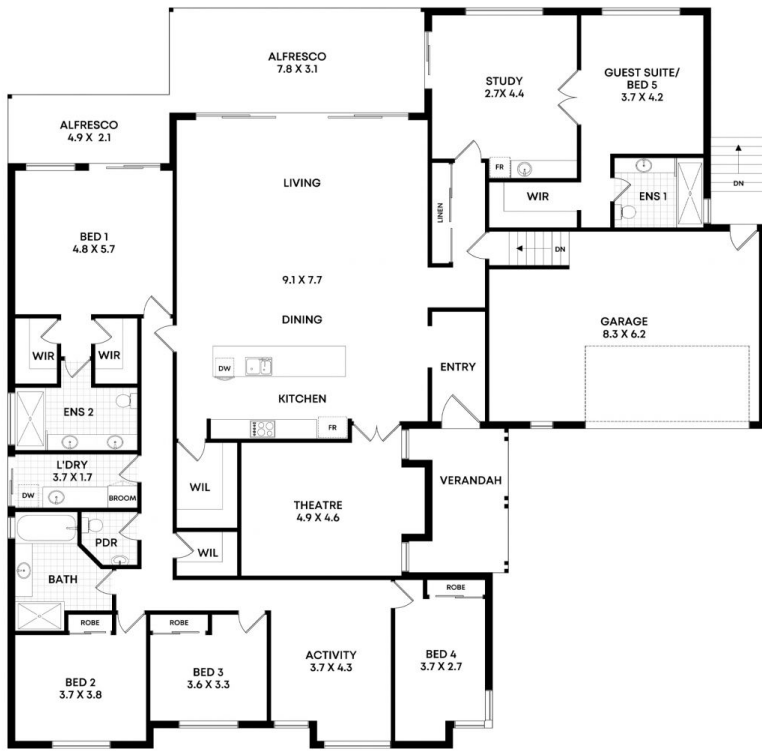
The latter is made up of a flexible living - or home-office - area with its own built-in kitchenette, with a sink and storage cupboards. Doubling as its own separate entrance (via the side of the property), it has a sliding door that leads

[For full version visit the website](https://www.joyofhope.com.au)

**Type** : House  
**Price** : \$ 1,330,000  
**Building Size** : 315.74 sqm  
**Land Size** : 1000 sqm  
**View** : <https://www.joyofhope.com.au/sale/wa/northern-suburbs/joondalup/residential/home/8224510>



**Johann Dique**  
0428844444



WOODLEA CRESCENT

**6 Woodlea Crescent, Joondalup**

Internal 315.74m<sup>2</sup> | Garage 51.00m<sup>2</sup> | Porch 10.80m<sup>2</sup> | Alfresco 43.03m<sup>2</sup>  
 Total 420.57m<sup>2</sup>

Whilst every attempt has been made to ensure the accuracy of the floorplans contained here, measurements of doors, windows and rooms are approximate and no responsibility is taken for any error, omission or misstatement. These plans are for representation purposes only.  
 DQ Care Pty Ltd T/A Joy Abode TC RA82603 ABN 45 107 395 059