





19 Wattlebird Loop Joondalup WA

4  2  2 

With spectacular permanent bushland reserve across the road and only a series of winding walking - or cycling - trails separating your front doorstep from picturesque Lake Joondalup only minutes away, this enchanting 4 bedroom 2 bathroom two-storey home defines contemporary comfort in the best way imaginable, offering a unique and generous floor plan that is within arm's reach of the heart of Joondalup's vibrant CBD precinct, despite its obvious seclusion.

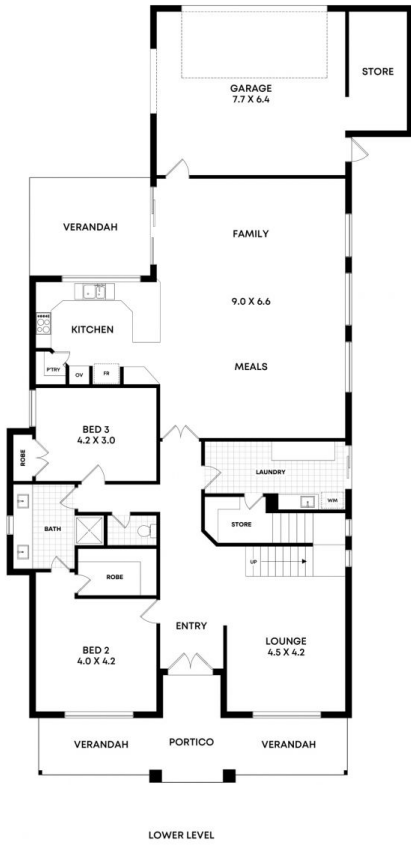
Sit out under your front verandah and listen to the sounds of the local birdlife chirping away, with your morning tea or coffee in hand. Once inside, retreat to the cosiness of a carpeted front lounge room off the entry, boasting its own

[For full version visit the website](https://www.joyofhope.com.au)

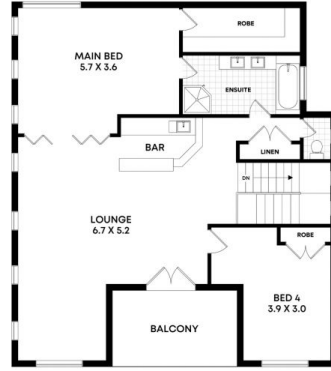
Type : House
Price : \$ 1,350,000
Building Size : 428 sqm
Land Size : 456 sqm
View : <https://www.joyofhope.com.au/sale/wa/northern-suburbs/joondalup/residential/house/8269987>



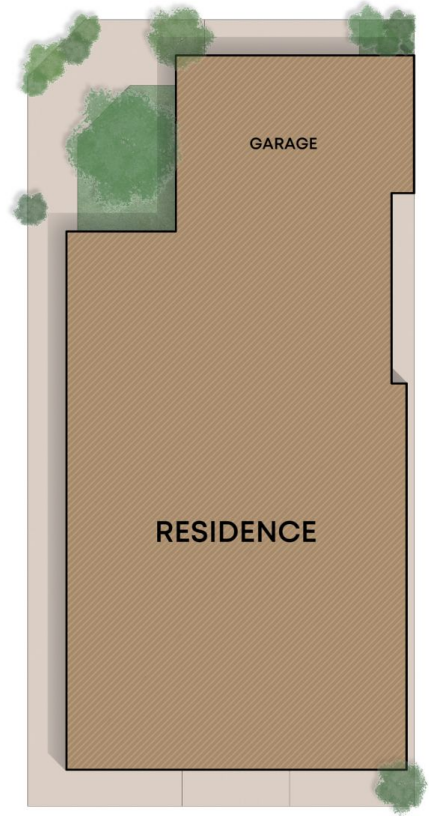
Johann Dique
 0120044444



LOWER LEVEL



UPPER LEVEL



WATTLEBIRD LOOP

19 Wattlebird Loop, Joondalup, WA

Internal 325m² | Garage/Store 52m² | Portico/Verandah 25m² | Verandah 14m² | Balcony 12m²
 Total 428m²

Whilst every attempt has been made to ensure the accuracy of the floorplans contained here, measurements of doors, windows and rooms are approximate and no responsibility is taken for any error, omission or misstatement. These plans are for representation purposes only.

DQ Care Pty Ltd T/A Joy Abode TC RA82603 ABN 45 107 395 059