



### 1 Hyams Link Burns Beach WA

4  2  2 

A functional design with a fantastic separation in the floor plan is the highlight of this commanding 4 bedroom 2 bathroom corner home that offers two spacious levels of quality family living in the magnificent "Burns Beach Estate", where the sun, sea, surf, sand and sensual ocean breezes are no more than a matter of footsteps - or a few short minutes - away from your front door.

Downstairs, a carpeted front lounge room is graced by a striking chandelier light fitting and neighbours a large under-stair storeroom. The formal dining room is also spacious and features internal white plantation shutters.

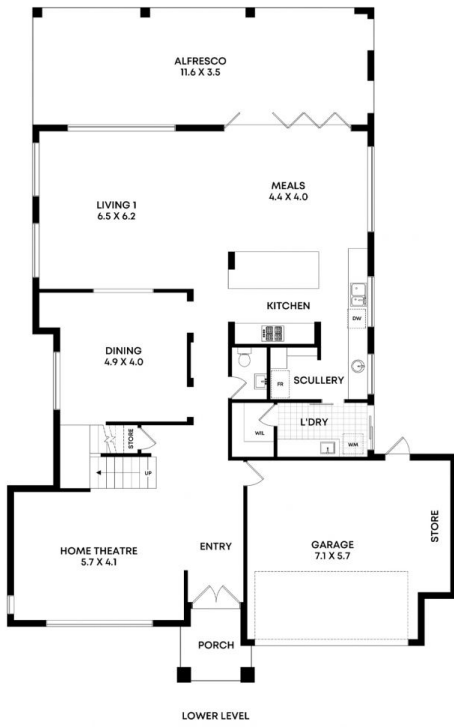
Also within the front of the house is a powder room that precedes a spacious open-plan family, dining and kitchen

[For full version visit the website](https://www.joyofhope.com.au)

**Type** : House  
**Price** : \$ 1,645,000  
**Building Size** : 425 sqm  
**Land Size** : 558 sqm  
**View** : <https://www.joyofhope.com.au/sale/wa/northern-suburbs/burns-beach/residential/house/8273226>



**Johann Dique**  
 0428041111



**1 Hyams Link, Burns Beach, WA**

Internal 338m<sup>2</sup> | Garage 42m<sup>2</sup> | Porch 5m<sup>2</sup> | Alfresco 40m<sup>2</sup>  
 Total 425m<sup>2</sup>

Whilst every attempt has been made to ensure the accuracy of the floorplans contained here, measurements of doors, windows and rooms are approximate and no responsibility is taken for any error, omission or misstatement. These plans are for representation purposes only.  
 DQ Care Pty Ltd T/A Joy Abode TC RA82603 ABN 45 107 395 059