





9 Miriam Court Landsdale WA

4  2  6 

Tucked away within a tranquil cul-de-sac setting opposite the lovely Brockwell Park, yet bursting with unexpected delights, this fantastic solar passive family entertainer is anything but ordinary. By day, soak up the seclusion in your peaceful retreat, and by night, turn up the fun with a host of surprise features that keep the good times rolling. Every single inch of this home is designed to impress, entertain and make you smile.

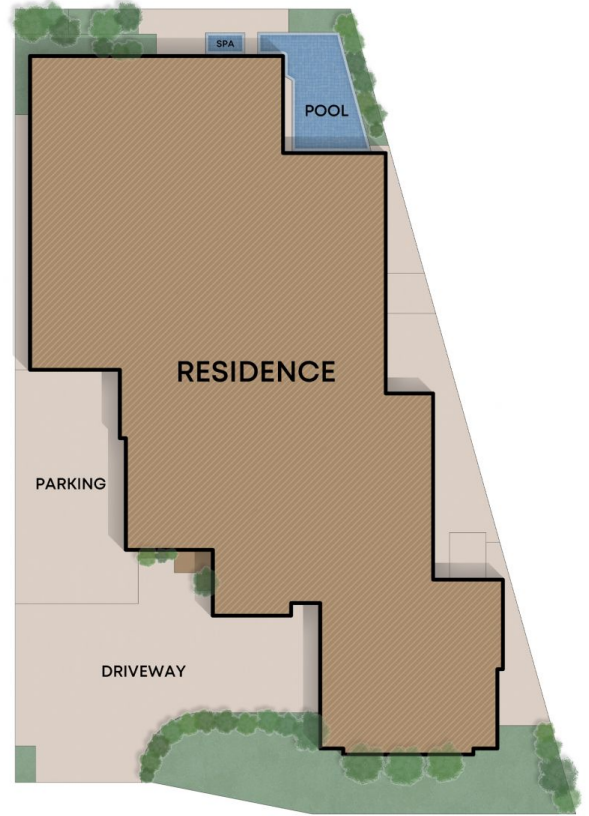
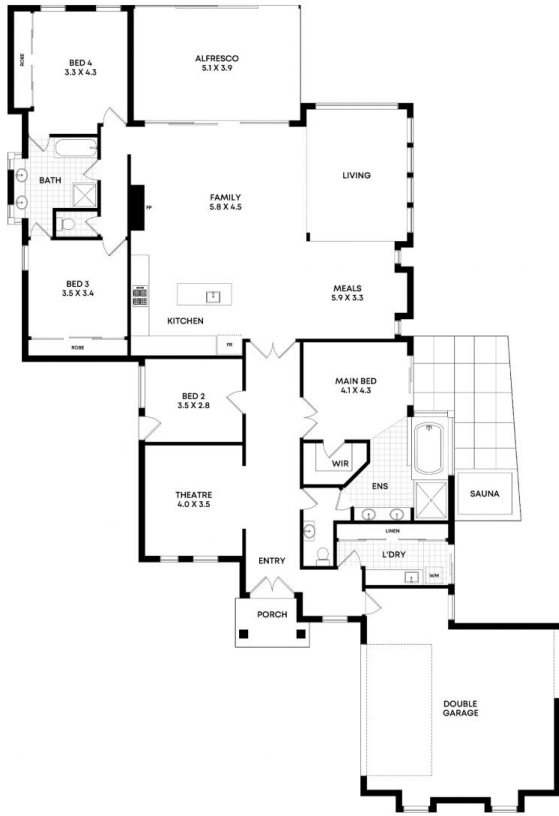
Welcoming you inside is a carpeted front lounge room, graced by stylish pendant light fittings, custom cabinetry and a gas bayonet for heating. Inches away, a versatile fourth bedroom also works well as either a nursery or study, complete with split-system air-conditioning and its own private side-access door.

[For full version visit the website](https://www.joyofhope.com.au)

Type : House
Price : \$ 1,250,000
Land Size : 675 sqm
View : <https://www.joyofhope.com.au/sale/wa/north-ern-suburbs/landsdale/residential/house/8317214>



Johann Dique
0430041111



9 Miriam Court, Landsdale

Internal 233m² | Garage 50m² | Porch 4m² | Alfresco 19m²
 Total 306m²

Whilst every attempt has been made to ensure the accuracy of the floorplans contained here, measurements of doors, windows and rooms are approximate and no responsibility is taken for any error, omission or misstatement. These plans are for representation purposes only.
 DQ Care Pty Ltd T/A Joy Abode TC RA82603 ABN 45 107 395 059