






**88 Beachside Drive BURNS BEACH WA**

4  3  3 

CLOSING DATE SALE: 10th of MARCH 2026  
The Seller reserves the right to accept an early offer.

Perfectly positioned opposite the ocean-view platform and coastal cycle path, this bespoke two-storey residence captures the essence of breezy, low-maintenance seaside living.

Every inch of the design has been masterfully utilised to maximise space, comfort and lifestyle ease, resulting in a home that feels both expansive and effortlessly refined. With multiple zones and finishes that speak to uncompromising quality, it delivers a beachfront sanctuary where sophistication meets an endless horizon.

[For full version visit the website](https://www.joyofhope.com.au)

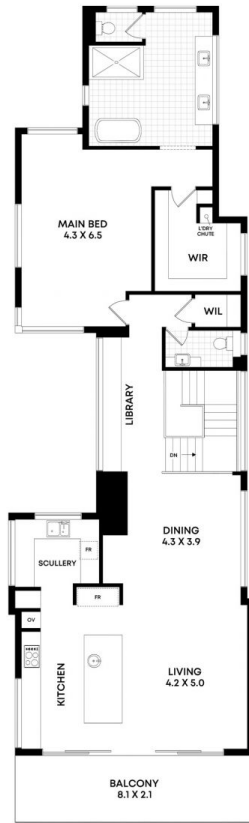
**Type** : House  
**Price** : \$ 3,277,520  
**Building Size** : 406 sqm  
**Land Size** : 358 sqm  
**View** : <https://www.joyofhope.com.au/sale/wa/northern-suburbs/burns-beach/residential/house/8639977>



**Johann Dique**  
0428044444



GROUND FLOOR



FIRST FLOOR



Beachside Drive

**88 Beachside Drive, Burns Beach**

Internal 331m<sup>2</sup> | Garage 46m<sup>2</sup> | Porch 12m<sup>2</sup> | Balcony 17m<sup>2</sup> | Total 406m<sup>2</sup>

Whilst every attempt has been made to ensure the accuracy of the floorplans contained here, measurements of doors, windows and rooms are approximate and no responsibility is taken for any error, omission or misstatement. These plans are for representation purposes only.  
DQ Care Pty Ltd T/A Joy of Hope TC RA82603 ABN 45 107 395 059